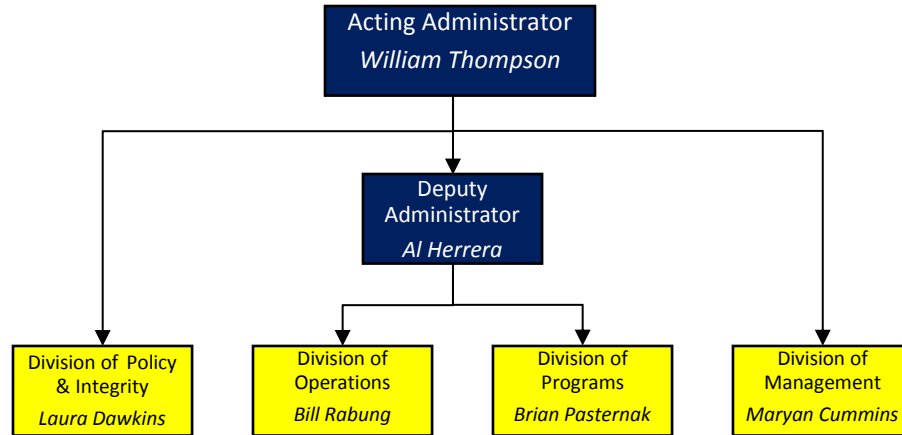


# Office of Foreign Labor Certification (OFLC)

## Division Organization Chart (Effective June 13, 2016)



**Division of Operations:** The Division of Operations provides oversight of the day-to-day operations of the three National Processing Centers which are responsible for processing employer applications seeking foreign labor certification on a temporary or permanent basis and for determining prevailing wages associated with applications. The Division also provides technical assistance to the three National Processing Centers involved in the processing of labor certification applications on current policies, procedures, and regulatory requirements.

**Division of Programs:** The Division of Programs addresses program activities and issues, stakeholder engagement, and improves public understanding and awareness of OFLC programs. The Division also provides case-level analysis and interpretation to ensure the correct application of immigration statutes, regulations, policies and processing standards across the three National Processing Centers.

**Division of Policy & Integrity:** The Division of Policy and Integrity develops, publishes, and assists in the implementation of new OFLC regulatory actions and evaluates and remediates decision-making quality and integrity. The Division provides policy recommendations through guidance documents, training materials, and general assistance to the OFLC and makes policy recommendations on new and existing legislation for foreign labor programs. The Division is also responsible for coordinating Ombudsman activities and interagency initiatives.

**Division of Management:** The Division of Management performs National Office level mission support functions, including financial administration, information and organizational management functions, grants administration, and performance reporting and data.